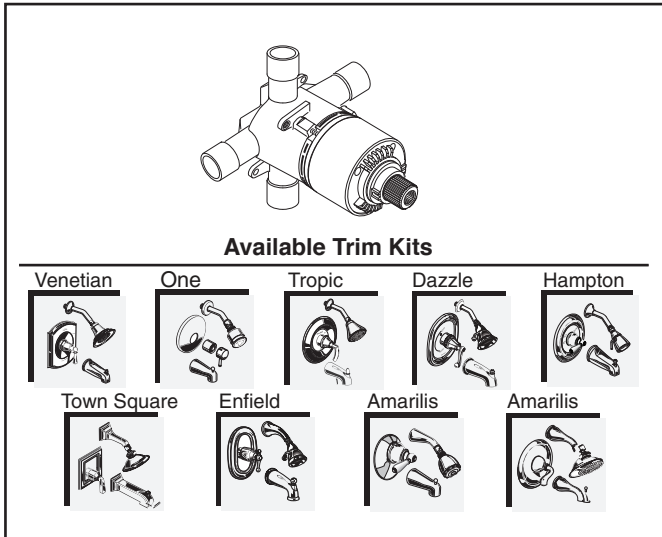


American Standard

Style That Works Better

Rough N READY UPGRADABLE

PRESSURE BALANCE BATH/SHOWER FAUCET Temperature Control Valve



R110 Valve Body Shown

GENERAL DESCRIPTION:

Cast brass body, washerless ceramic disc valve cartridge with back-to-back capability and hot limit safety stop. Cycles from "off" to "cold" to "hot". Pressure balancing cartridge maintains constant output temperature in response to changes in relative hot and cold supply pressure. One-half inch inlets and outlets (choice of direct sweat, threaded or PEX). Available with screwdriver stops. Rough-in plaster guard designed for use as thin-wall mounting adaptor. Valve body will accept a variety of decorative Bath/Shower trims.

PRODUCT FEATURES:

Cast Brass Valve Body: Durable - Quality that will last a lifetime. Ideal material for prolonged contact with water.

Ceramic Disc Valve Cartridge: Assures a lifetime of drip-free performance. Allows easy fine tuning of temperature (125° handle rotation from off to hot).

Pressure Balancing Valve Cartridge: Maintains constant output temperature in response to changes in hot and cold supply pressure. Diaphragm system engineered to eliminate cross flow. Avoids failure due to mineral deposits - ideal for use in hard water.

Back-to-Back Capability: Hot and cold can be reversed quickly and easily.

Adjustable Hot Limit Safety Stop: Limits the amount of hot water allowed to mix with cold. Reduces the risk of accidental scalding.

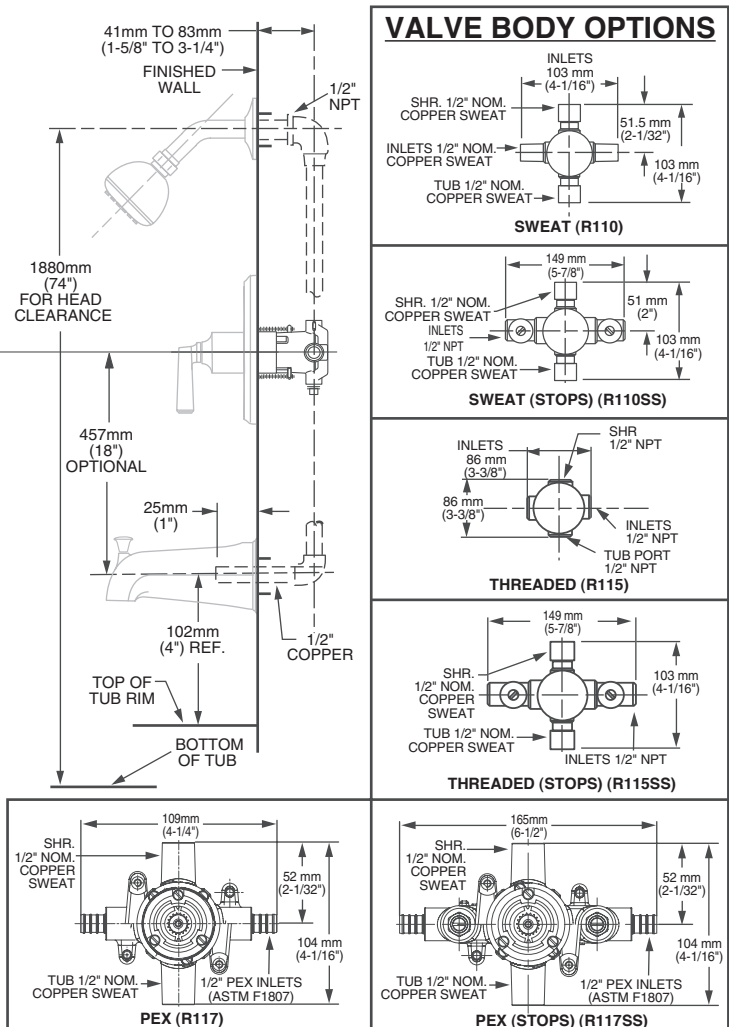
Exclusive Plaster Guard: Plaster guard is designed to protect valve during installation and serve as a mounting plate for thin-wall installations. 2 piece design allows valve to be tested prior to trim installation.

Wide Rough-in Range: From 1-5/8" to 3-1/4" (41 to 83mm).

MODEL NUMBER:

- R110 Pressure Balance Rough Valve Body only**
Direct sweat inlets/outlets. LESS trim.
- R110SS Pressure Balance Rough Valve Body only with Screwdriver stops**
Direct sweat inlets/outlets. Screwdriver stops. LESS trim.
- R115 Pressure Balance Rough Valve Body only**
Female thread inlets/outlets. LESS trim.
- R115SS Pressure Balance Rough Valve Body only with Screwdriver stops**
Female thread inlets/outlets. Screwdriver stops. LESS trim.
- R117 Pressure Balance Rough Valve Body only**
PEX inlets/Direct sweat outlets. LESS trim.
- R117SS Pressure Balance Rough Valve Body only with Screwdriver stops**
PEX inlets/Direct sweat outlets. Screwdriver stops. LESS trim.

See reverse for available trim kits.



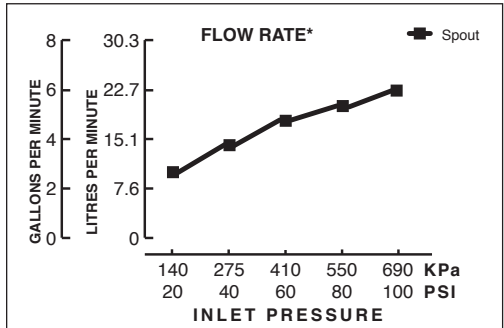
PRESSURE BALANCE BATH/SHOWER FAUCET Temperature Control Valve

Valve + Trim: Trim Kit & Valve Body Packaged Separately

To order: Specify valve body and trim kit desired

Example: R110 - Direct Sweat Valve Body

T008 502 - Venetian Bath/Shower Trim Kit (Metal Lever Handle)



*Flow rates shown are for mixed hot and cold.

• Showerhead with 2.15gpm/9.5L.min. flow restrictor.

CODES AND STANDARDS

These products meet or exceed the following codes and standards:

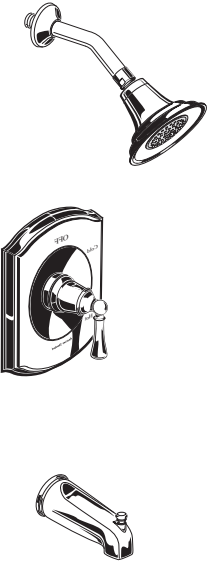
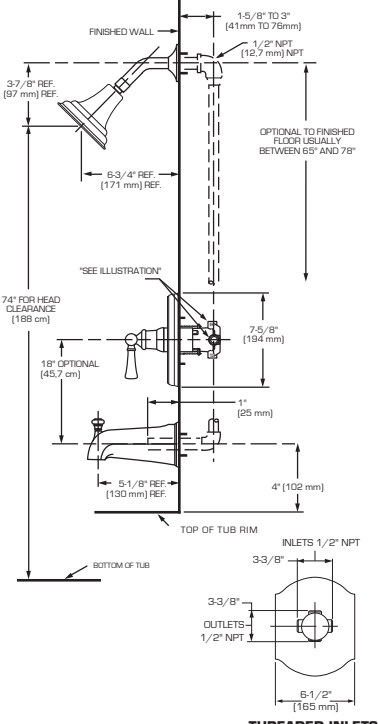
- ANSI A 117.1**
- ASSE 1016**
- ASME A112.18.1M**
- IAPMO (cUPC)**

VALVES						
		R110	R110SS	R115	R115SS	R117
	Direct Sweat Inlets/Outlets	Direct Sweat Inlets/Outlets w/ Screwdriver Stops	Female Thread Inlets/Outlets	Female Thread Inlets/Outlets w/ Screwdriver Stops	PEX Inlets/Direct Sweat Outlets	PEX Inlets/Direct Sweat Outlets w/ Screwdriver Stops

TRIM KITS		Venetian	Tropic	Dazzle	Hampton Town Square	One	Enfield	Amarilis	Amarilis		
B/S		T008 502	T038 502	T028 502	T215 730	T555 502	T064 502	T373 5X2	T335 541	T345 431	
Shower		T008 501	T038 501	T028 501	T212 730	T555 501	T064 501	T373 5X1	T332 541	T342 431	
Valve		T008 500	T038 500	T028 500	T211 730	T555 500	T064 500	T373 5X0	T331 541	T341 431	

TRIM KITS for Temperature Control Valves

Trim Kits for R110, R110SS, R115, R115SS, R117, R117SS rough valve bodies. Showerhead with 2.15gpm/9.5L/min. maximum flow. **TRIM KITS ONLY. VALVE MUST BE ORDERED SEPARATELY.**

Trim Kit	Model # Description	Finishes*	Roughing-In Dimensions
<p>VENETIAN</p> 	<p>T008 502 BATH/SHOWER Trim Kit</p> <ul style="list-style-type: none"> • Metal Lever Handle • Brass wall escutcheon • Showerhead, arm and flange • Slip-on diverter tub spout <p>T008 501 SHOWER ONLY Trim Kit</p> <ul style="list-style-type: none"> • Metal Lever Handle • Brass wall escutcheon • Showerhead, arm and flange <p>T008 500 VALVE ONLY Trim Kit</p> <ul style="list-style-type: none"> • Metal Lever Handle • Brass wall escutcheon 	<p>.002 Polished Chrome .295 Satin (PVD)</p>	 <p>THREADED INLETS</p>